

50 SERIES

Spin-On Filter Head



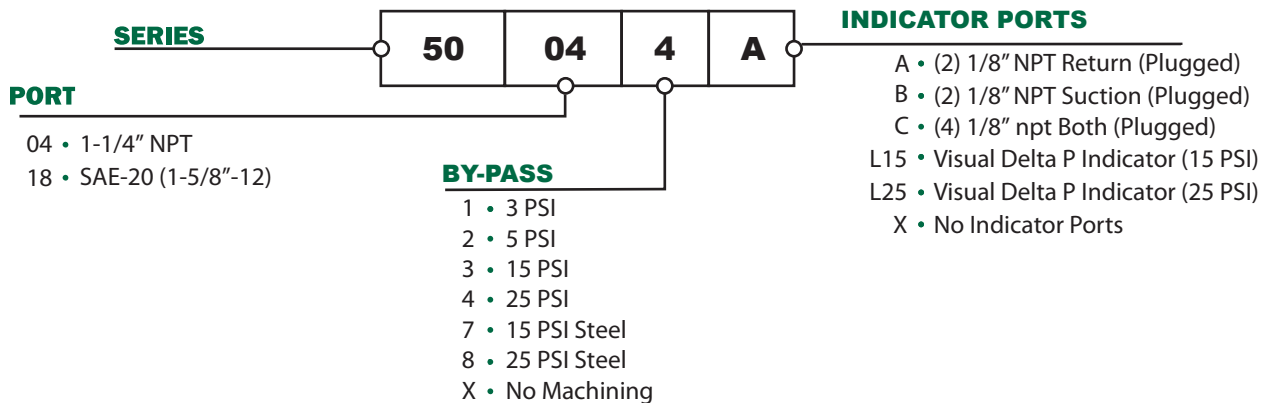
SPECIFICATIONS

Working Pressure	200 PSI (13.8 BAR) Maximum 75 PSI Maximum without bypass
Flow Capacity	50 GPM (378 LPM)
Operating Temperature	225°F (107°C) Maximum
Shipping Weight	12 lbs
Fluid Compatability	Petroleum based oils, high water based fluids, water glycols and oil/water emulsions.
By-Pass Valve Cracking Pressure	All sizes +/-10% of setting
Post Size	1-1/2" - 16 UN and 1-1/4" BSP

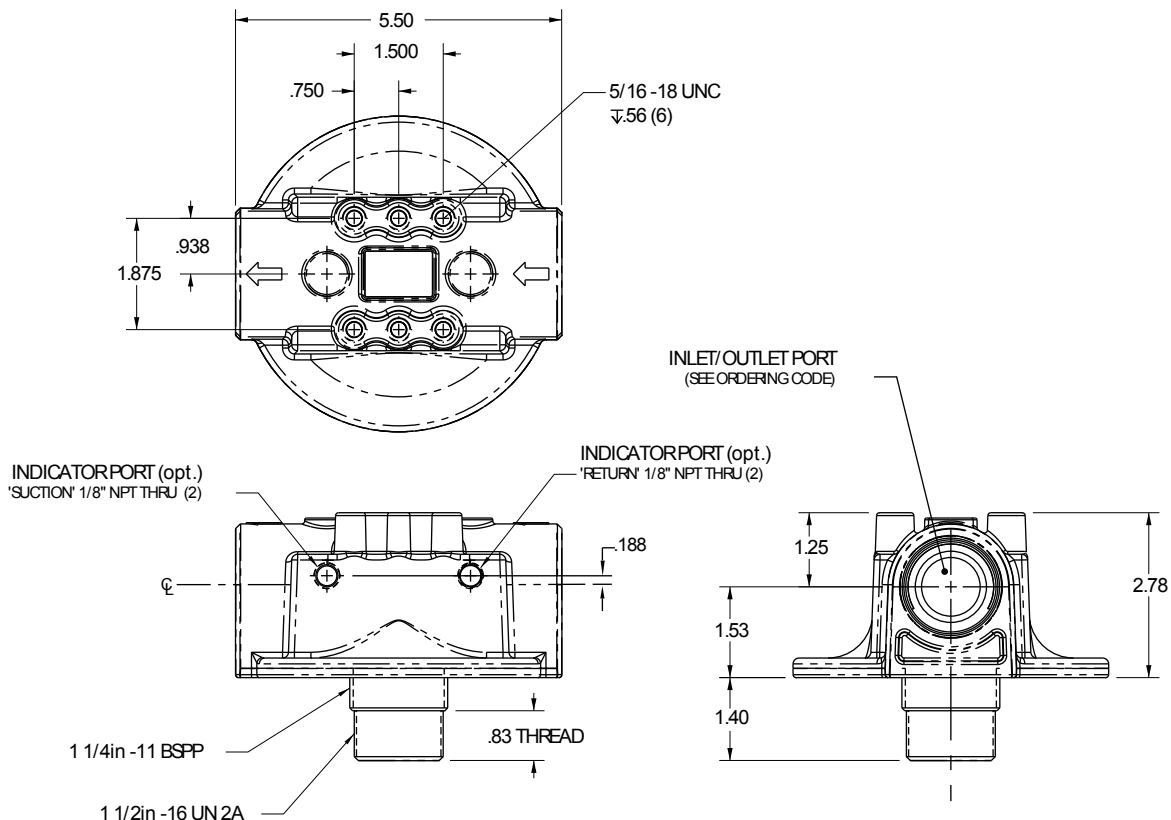
STANDARD MODELS

MODEL NUMBER	PORT SIZE	BY-PASS	INDICATOR PORTS
50044A	1-1/4" NPT	25 PSI	(2) 1/8" NPT
50044X	1-1/4" NPT	25 PSI	(2) 1/8" NPT
50184A	1-1/4" NPT	25 PSI	(2) 1/8" NPT
50184X	1-1/4" NPT	25 PSI	(2) 1/8" NPT

ORDERING CODE



DIMENSIONS



50 SERIES



Spin-On Filter Head

ACCESSORIES

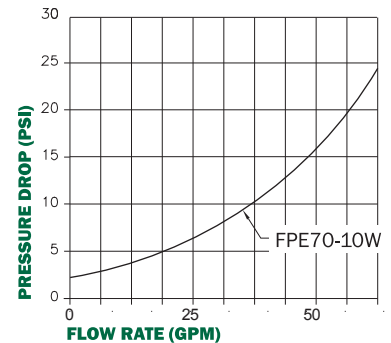
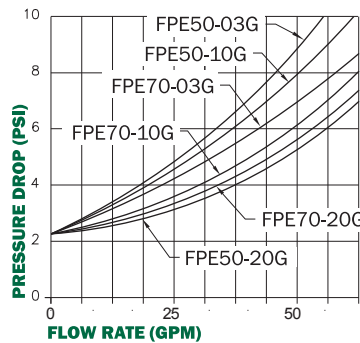
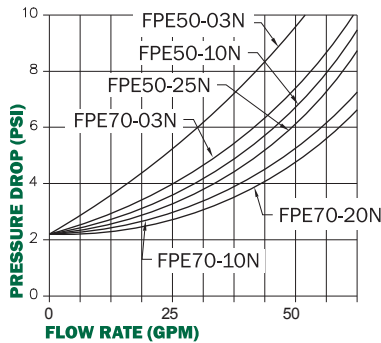
GAUGES

- P77-7003**
0-60 PSI Gauge (Indication at 15 PSI)
- P77-7004**
0-60 PSI Gauge (Indication at 25 PSI)
- P77-7021**
0-30" Hg Vacuum Gauge

SWITCHES

- P77-7006**
Electrical (with 12" wire leads .
Set point (rising) 22 PSI.
- P77-7005**
Electrical (with DIN 43650 connector)
Set point (rising) 22 PSI.

PRESSURE DROP



FILTER ELEMENTS

PART NUMBER	ELEMENT LENGTH	RATING B(x)=2/20/75	AREA (Sq. In.)	MEDIA TYPE
FPE 50-03N	7"	1μ/8μ/12μ	850	Cellulose
FPE 70-03N	11"	1μ/8μ/12μ	1530	Cellulose
FPE 50-10N	7"	14μ/28μ/36μ	664	Cellulose
FPE 70-10N	11"	14μ/28μ/36μ	1227	Cellulose
FPE 50-25N	7"	16μ/35μ/47μ	568	Cellulose
FPE 70-25N	11"	16μ/35μ/47μ	1052	Cellulose
FPE 70-10W	11"	10μ/18μ/ -	648	Water Removal
FPE 50-03G	7"	1.5μ/2.5μ/3μ	490	Microglass
FPE 70-03G	11"	1.5μ/2.5μ/3μ	882	Microglass
FPE 50-10G	7"	2μ/7μ/12μ	490	Microglass
FPE 70-10G	11"	2μ/7μ/12μ	882	Microglass
FPE 50-20G	7"	7μ/16μ/23μ	490	Microglass
FPE 70-20G	11"	7μ/16μ/23μ	882	Microglass
FPE 50-100M	7"	149μ	213	Wire Mesh
FPE 70-100M	11"	149μ	365	Wire Mesh



FILTRATION PRODUCTS CORP.

763.428.6415

Fax: 763.428.8659

18151 Territorial Road, Dayton, MN 55369

www.filtrationproducts.com