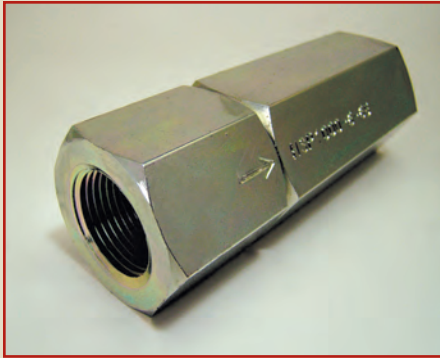




HSP Series Hard Seat Check Valves



STEEL

FEATURES

- Zinc clear plated body (RoHs compliant)
- Metal-to-metal seat
- One-piece body

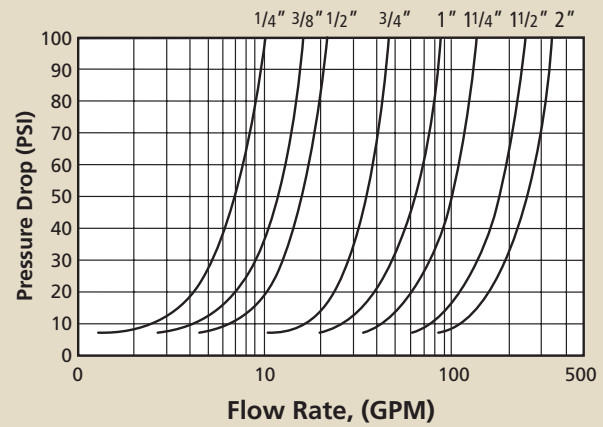
APPLICATIONS

- Hydraulic
- Chemical
- Construction

SPRING PRESSURES

- 5 or 65 PSI

Pressure Drop vs. Flow Rate



NPT

SIZE	PART NUMBER	THREAD	SPRING	DIMENSIONS (IN)	
				B	C
1/4	HSP-1000-2-5	1/4" NPTF	5 PSI	2.44	.87
1/4	HSP-1000-2-65	1/4" NPTF	65 PSI	2.44	.87
3/8	HSP-1000-3-5	3/8" NPTF	5 PSI	2.87	.95
3/8	HSP-1000-3-65	3/8" NPTF	65 PSI	2.87	.95
1/2	HSP-1000-4-5	1/2" NPTF	5 PSI	3.50	1.14
1/2	HSP-1000-4-65	1/2" NPTF	65 PSI	3.50	1.14
3/4	HSP-1000-6-5	3/4" NPTF	5 PSI	4.25	1.50
3/4	HSP-1000-6-65	3/4" NPTF	65 PSI	4.25	1.50
1	HSP-1000-8-5	1" NPTF	5 PSI	5.12	1.69
1	HSP-1000-8-65	1" NPTF	65 PSI	5.12	1.69
1 1/4	HSP-1000-10-5	1 1/4" NPTF	5 PSI	5.56	2.40
1 1/4	HSP-1000-10-65	1 1/4" NPTF	65 PSI	5.56	2.40
1 1/2	HSP-1000-12-5	1 1/2" NPTF	5 PSI	5.56	2.56
1 1/2	HSP-1000-12-65	1 1/2" NPTF	65 PSI	5.56	2.56
2	HSP-1000-16-5	2" NPTF	5 PSI	7.91	3.15
2	HSP-1000-16-65	2" NPTF	65 PSI	7.91	3.15

RATED FLOW

SIZE	GPM
1/4	6
3/8	9.5
1/2	18
3/4	30
1	35
1 1/4	60
1 1/2	90
2	145

RATED PRESSURE – PSI

SIZE	PSI
1/4	6000
3/8	6000
1/2	5000
3/4	5000
1	5000
1 1/4	3000
1 1/2	3000
2	3000

VALVES

ORB

SIZE	PART NUMBER	THREAD	SPRING	DIMENSIONS (IN)	
				B	C
1/4	HSP-1001-4-5	7/16-20 ORB	5 PSI	2.44	.87
1/4	HSP-1001-4-65	7/16-20 ORB	65 PSI	2.44	.87
3/8	HSP-1001-6-5	9/16-18 ORB	5 PSI	2.87	.95
3/8	HSP-1001-6-65	9/16-18 ORB	65 PSI	2.87	.95
1/2	HSP-1001-8-5	3/4-16 ORB	5 PSI	3.50	1.14
1/2	HSP-1001-8-65	3/4-16 ORB	65 PSI	3.50	1.14
3/4	HSP-1001-12-5	1 1/16-12 ORB	5 PSI	4.25	1.50
3/4	HSP-1001-12-65	1 1/16-12 ORB	65 PSI	4.25	1.50
1	HSP-1001-16-5	1 5/16-12 ORB	5 PSI	5.12	1.69
1	HSP-1001-16-65	1 5/16-12 ORB	65 PSI	5.12	1.69
1 1/4	HSP-1001-20-5	1 5/8-12 ORB	5 PSI	5.56	2.40
1 1/4	HSP-1001-20-65	1 5/8-12 ORB	65 PSI	5.56	2.40
1 1/2	HSP-1001-24-5	1 7/8-12 ORB	5 PSI	5.56	2.56
1 1/2	HSP-1001-24-65	1 7/8-12 ORB	65 PSI	5.56	2.56

